

BL 229

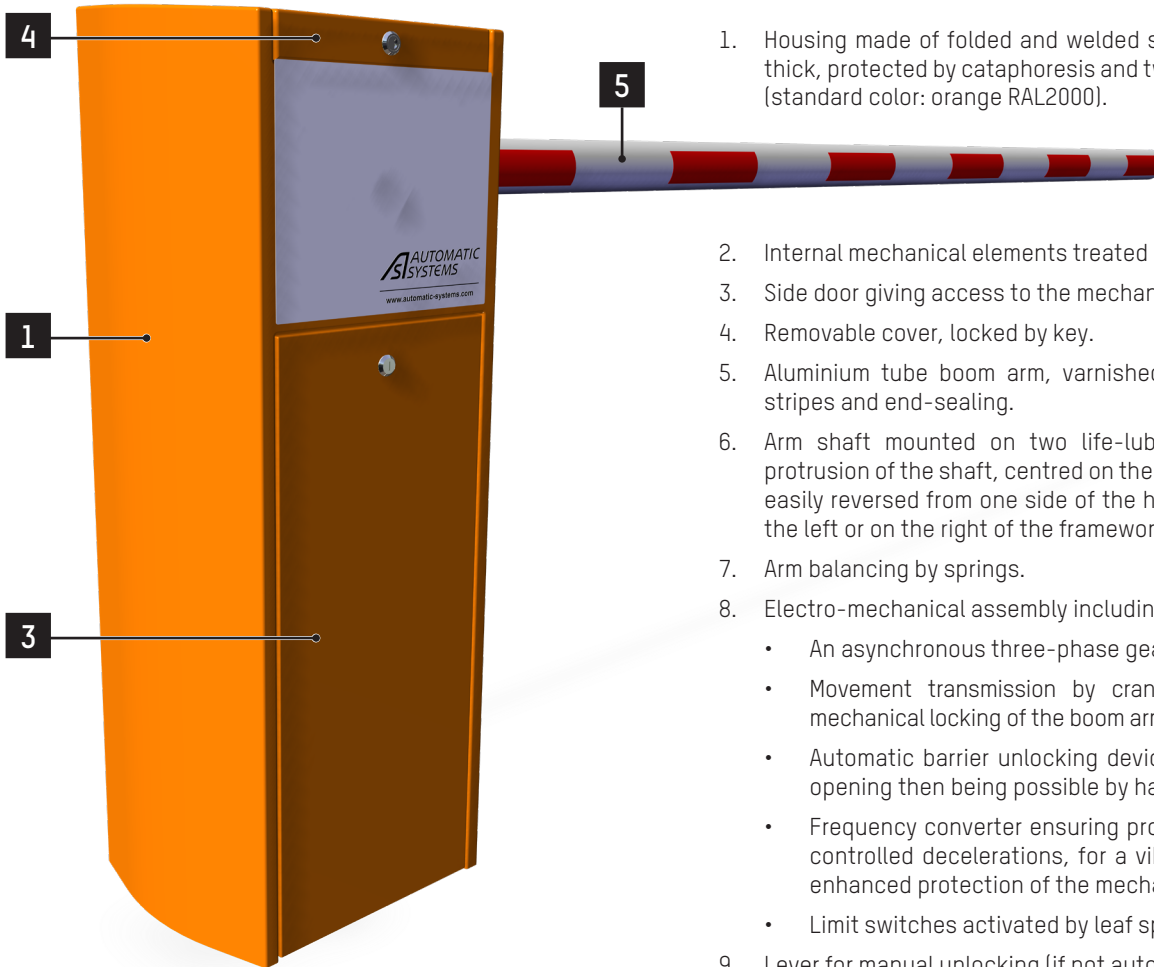
Datasheet

Rev. 16 • Update 07/2021

AS AUTOMATIC
SYSTEMS

DESCRIPTION

1. Housing made of folded and welded sheet steel, from 2 to 6 mm thick, protected by cataphoresis and two coats of structured paint (standard color: orange RAL2000).
2. Internal mechanical elements treated by electrogalvanisation.
3. Side door giving access to the mechanism, with security lock.
4. Removable cover, locked by key.
5. Aluminium tube boom arm, varnished white with red reflecting stripes and end-sealing.
6. Arm shaft mounted on two life-lubricated ball bearings. The protrusion of the shaft, centred on the housing side, allows it to be easily reversed from one side of the housing to the other: arm on the left or on the right of the framework housing.
7. Arm balancing by springs.
8. Electro-mechanical assembly including:
 - An asynchronous three-phase geared motor.
 - Movement transmission by crankshaft-rod device insuring mechanical locking of the boom arm in end positions.
 - Automatic barrier unlocking device in case of power failure, opening then being possible by hand.
 - Frequency converter ensuring progressive accelerations and controlled decelerations, for a vibration-free movement and enhanced protection of the mechanism.
 - Limit switches activated by leaf spring.
9. Lever for manual unlocking (if not automatic mode set up).
10. Control board enabling various additional commands and/or accessory options
11. Adjustable information contacts:
 - State of the barrier's position (open or closed),
 - State of the presence detectors,
 - Command for master-slave barriers (movement of one barrier controlled by the other barrier),
 - ...
12. Fixing frame to be fixed in a concrete base to be provided by the customer.



The BL 229 rising barrier is a universal barrier: its high performance and great reliability enable it to be used in a wide range of applications.

Numerous accessories offered, allow to meet various installation constraints and various requirements in terms of security.



STANDARD TECHNICAL SPECIFICATIONS

Electrical Power supply	Single phase 230VAC, 50/60Hz + Ground ⁽¹⁾ .
Nominal power consumption	335 W (at maximum speed and without options)
Motor	Three-phase asynchronous 250W motor
Gearbox	Life-lubricated worm-screw speed reduction unit.
Type of arm	Aluminium tube boom arm, with round section diameter 84 mm.
Minimum operation time	Adjustable between 1,2 and 4 sec. according to 3 profiles: 1. Standard ⁽²⁾ 2. Intermediate ⁽³⁾ 3. Maximum ⁽⁴⁾
Operational temperature	Between -20 and +50°C (without optional heating)
Free passage (L)	From 2 to 6m ⁽⁵⁾
MCBF (mean cycles between failures)	10,000,000, with normal maintenance.
Net weight	83 kg (excluding arm)
IP	54
Noise emitted during operation	<70db(A) ⁽⁶⁾
CE	Conforms to European standards

⁽¹⁾ Not to be connected to a floating network or to high impedance earthed industrial distribution network.

⁽²⁾ Standard speed - Impact force in accordance with EN 12453.

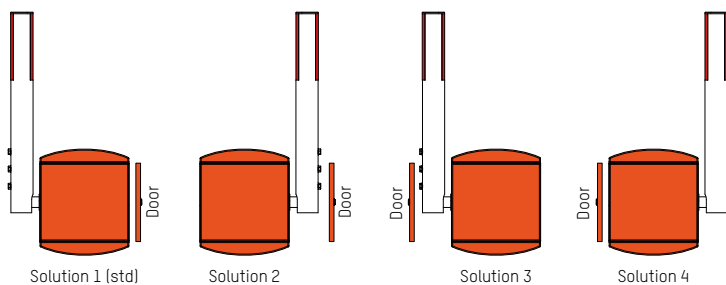
⁽³⁾ Intermediate speed - Impact force in accordance with EN 12453 with the addition of a foam protection under the arm.

⁽⁴⁾ Maximum speed - The installer must ensure that the installation conforms to the standard, e.g. with dead man operation.

⁽⁵⁾ Between 5 and 6 m, a tip support is delivered with the barrier.

⁽⁶⁾ Measured at 1 m from the surface of the machinery and at a height of 1.60 m above the ground; according to ISO 3744. No hearing protection needed.

CONVENTIONS



WORKS TO BE SUPPLIED BY THE CUSTOMER

- Ground installation
- Power supply
- Wiring to any external devices.

Note: comply with the installation plan.

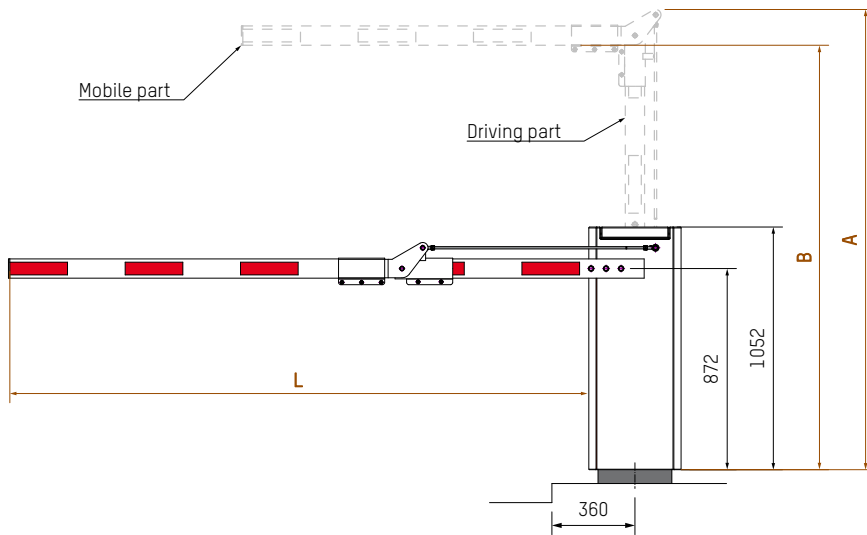
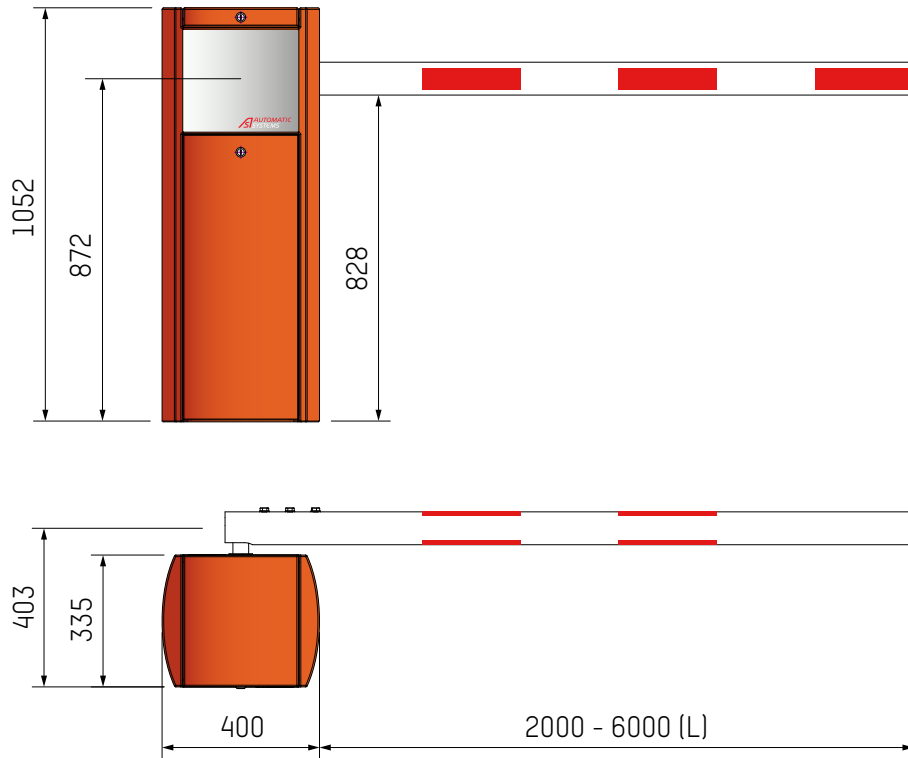
OPTIONS

1. Articulated round arm. ⁽⁷⁾⁽⁹⁾
2. Articulated flat arm. ⁽⁷⁾⁽⁹⁾
3. Folding rigid aluminum skirt. ⁽⁷⁾
4. Back oval arm swing-off (swinged-off arm detection device included). ⁽⁷⁾
5. Carbon Protecta® arm - Lg. 2.5m ; 3m ; 3.5m
6. Foam protection under the aluminum arm (for higher speed within EN 12453).
7. Rubber protection profile. ⁽⁷⁾
8. Automatic opening of the arm at 45° in case of power failure.
9. Limit switch for info - Arm position in case of power failure.
10. Height adjustable tip support. ⁽⁷⁾
11. Electromagnetic tip support (up to 5m included) - Ø80mm or Ø84mm arm. ⁽⁷⁾
12. Folding tip support (up to 5m included). ⁽⁷⁾
13. Opening protection of both cover & door - Switch-off of the frequency inverter.
14. Push button box.
15. Programmable clock (Weekly or Yearly).
16. Key switch on the housing.
17. Radio transmitter / receiver.
18. Inductive loop for detection car or truck.
19. Presence sensor on rail.
20. Photo-electric cell (Transmitter + Receiver or Reflex).
21. Support post for photo-electric cel.
22. Cell mounting - Transmitter + Receiver or Reflex.
23. Ultrasonic detector on the housing under the arm (protective cover included).
24. Human Machine Interface colour screen with keypad.
25. Ethernet interface.
26. SD memory card.
27. Input / output (I/O) extension card.
28. Totalling counter (with or without reset).
29. LEDs on arm - Per pair (Flashing lights (red) when closed).
30. Traffic lights - LEDs - Supply.
31. Traffic lights - LEDs - Fixed on a support post on the barrier.
32. Support post for traffic lights.
33. Extension board (electronic board for third-party traffic lights).
34. Acoustic alarm 100dB (internal mounting) during the barrier closing movement.
35. Aluminum traffic sign (Ø 400mm). ⁽⁷⁾
36. LED flashing light on the cover.
37. Painted in another RAL colour.
38. Treatment for aggressive saline environment. ⁽⁸⁾
39. Raised base.
40. Power supply 120V - 50/60Hz.
41. Thermostatic heating - Heating for operation until -35°C.
42. Cooling kit (frequency inverter & housing door).

⁽⁷⁾ Certain options are mutually incompatible and/or reduce the arm's range. Consult the "Limit of use" table of the price list.

⁽⁸⁾ Recommended when the barrier is installed within 10 km of the coast and may be subject to salt attack: sandblasting + Alu Zinc plating 80µm outside (40µm inside) + polyzinc 80µm + 80µm powder paint.

STANDARD DIMENSIONS (mm)



⁽⁹⁾ Folding arm (option)

	Driving part length (mm)	A (mm)	B (mm)	L (mm)
Round arm	1030	1995	1840	2500 to 5000
	1230	2195	2040	
	1330	2295	2140	
Flat arm	1000	1972	1810	2200 to 3000
	1100	2072	1910	
	1200	2172	2010	
	1300	2272	2110	

